



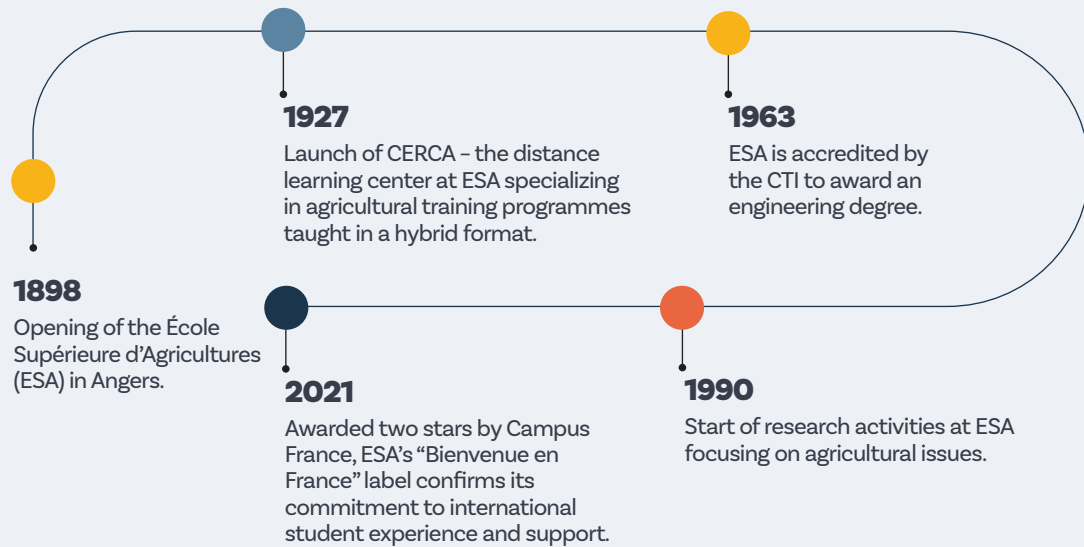
# L'ÉCOLE SUPÉRIEURE DES AGRICULTURES

AGRONOMY ENVIRONMENT FOOD

EMPOWERING TOMORROW'S PROFESSIONALS  
FOR SUSTAINABLE TRANSITIONS



# ABOUT US



## OPENING WORDS

At the École Supérieure des Agricultures, we are committed to addressing today's major agricultural, food, and environmental challenges. We are proud to hold the Lucie 26 000 certification, recognizing our responsible and sustainable campus-wide strategy.

This recognition reflects a deep transformation through concrete initiatives serving both society and the environment.








Our programs evolve constantly to prepare students as engaged professionals, ready to create real solutions for tomorrow. International openness and teaching innovation are central to our model, always grounded in real-world practice.

Research plays a vital role in the agricultural and food transition, while strong partnerships with businesses and local communities offer students meaningful, future-focused opportunities.

Let's keep working together for sustainable agriculture and food systems—today and for generations to come.



**René SIRET**  
General Director

-  VITICULTURE & OENOLOGY
-  ANIMAL PRODUCTION
-  AGRIBUSINESS & MANAGEMENT
-  ENVIRONMENT & LANDSCAPE
-  FOOD SCIENCE
-  PLANT PRODUCTION & AGROECOLOGY
-  HORTICULTURE & LANDSCAPING



MORE THAN  
**120**  
PARTNER UNIVERSITIES



OVER  
**125**  
YEARS OF EXPERTISE AND COMMITMENT

OVER  
**50**  
STUDY PROGRAMMES



MORE THAN  
**40**  
NATIONALITIES



MORE THAN  
**2**  
CAMPUSES IN ANGERS AND IN PARIS



MORE THAN  
**200**  
INTERNATIONAL STUDENTS



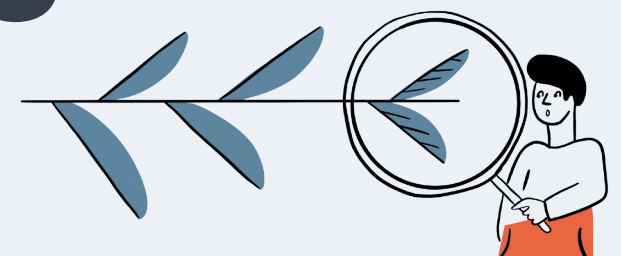
MORE THAN  
**3,000**  
STUDENTS



MORE THAN  
**150,000**  
ALUMNI ACROSS THE WORLD



**5** RESEARCH LABORATORIES



# PROGRAMS

ESA's mission is to educate responsible professionals committed to sustainability, ecological transition, and resilient food systems through an engaging and collaborative learning environment.

## SUMMER PROGRAMMES

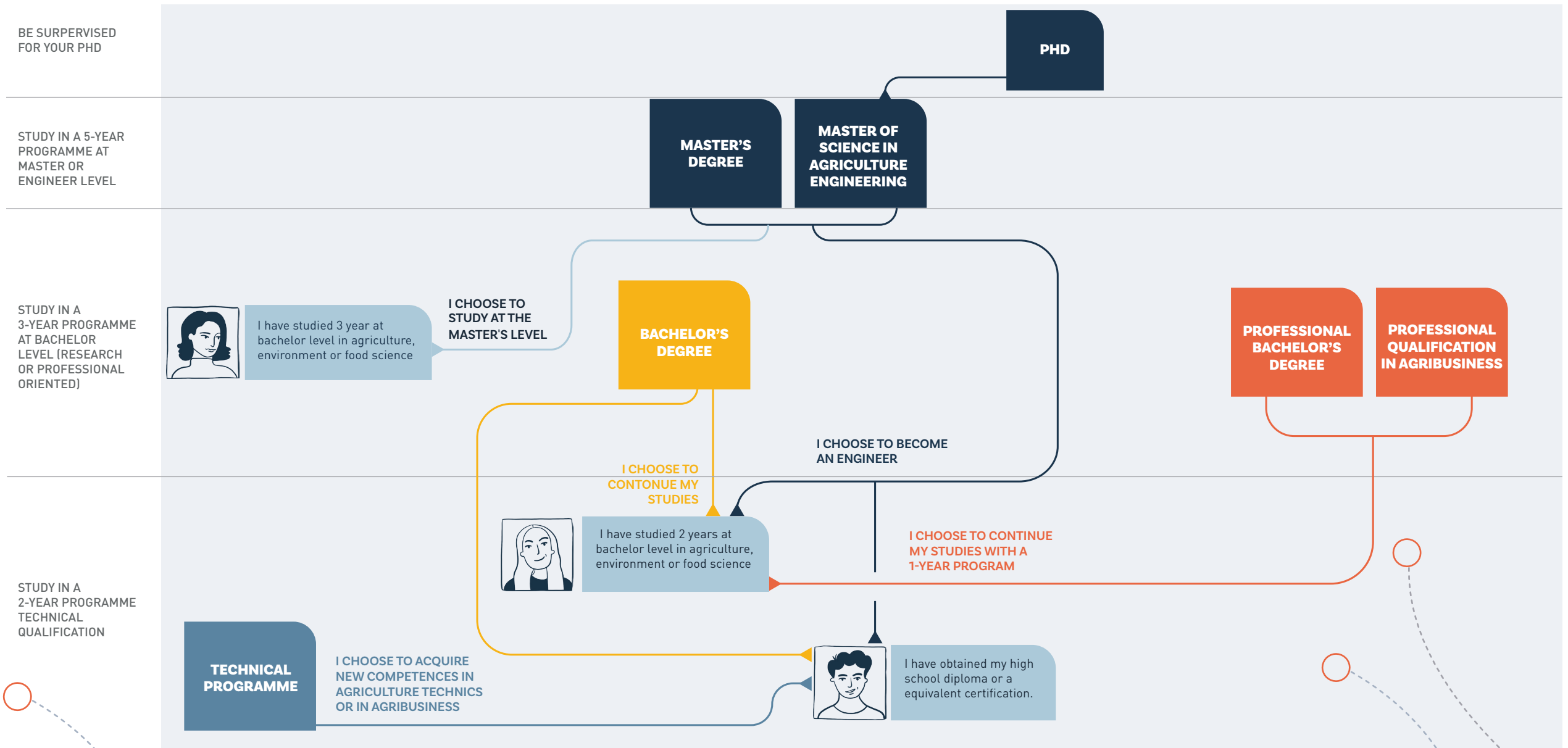
Every year, ESA opens its doors to international students looking for a unique few weeks' programme. ESA is currently offering 2 summer programmes on our two campuses.



## COMPANY PARTNERS

ESA is deeply embedded in its ecosystem, particularly in the fields of agriculture, food, and the environment, through both academic and research collaborations. Expanding partnerships with companies is essential to ensure ESA remains aligned with industry needs and evolving business trends. The company-sponsored program offered by ESA exemplifies how the institution strives to advance in close partnership with its ecosystem.

## STUDY PROGRAMMES OVERVIEW



# CAMPUS

## ANGERS CAMPUS



Welcoming student city in the Loire Valley, known for its castles and wine. Walkable bike-friendly and full of culture.

# 45,000

STUDENTS AT ANGERS

OVER

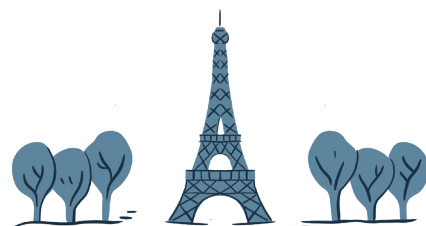
# 4,500

INTERNATIONAL STUDENTS IN ANGERS

# 90 MIN

DISTANCE FROM PARIS BY TRAIN

## PARIS CAMPUS, SAINT-QUENTIN EN YVELINES



Easy access to the capital's cultural and professional. High industry connection situated in the Paris-Saclay innovation cluster.

# 17,000

STUDENTS IN SAINT-QUENTIN EN YVELINES

# 16,000

COMPANIES PRESENT IN SAINT-QUENTIN EN YVELINES

# 20 MIN

FROM CENTRAL PARIS

VIA PUBLIC TRANSPORT

## CAMPUS LIFE

Life at ESA is lively across 2 campuses, offering bike rentals, 20+ student clubs, 80+ collaborative projects, and over 450 students actively involved in campus life. More than 100 conferences are held each year, creating a vibrant and connected community for all. The campus is equipped with all the necessary facilities and buildings to ensure smooth and effective teaching and experience:

- Collaborative classroom
- Language Centre
- Media Library
- Teaching Laboratories



## INTERNATIONAL WELCOME DESK

Our International Welcome Desk welcomes hundreds of new students each year in Angers and Paris, offering comprehensive support for a smooth transition.

Services include assistance with accommodation and administration paperwork.

A Buddy Programme and an orientation week ensure a successful academic journey.



# RESEARCH

At ESA, pluridisciplinary research is at the heart of learning and innovation, driven by real-world challenges and closely connected to education, industry, and the transitions shaping tomorrow's agriculture and food systems.

## LARESS RESEARCH UNIT

(USC ESA | INRAE)

*Rural development, Environment and Well-being, Gender and Agriculture, capacity-building in rural areas.*

Farmers face major changes from new policies, environmental pressures, tech advances, and workforce renewal. LARESS studies these shifts, focusing on professional evolution, competitiveness, and the social and territorial factors shaping agriculture's future.

## BAGAP RESEARCH UNIT

(UMR INRAE | AGROCAMPUS OUEST | ESA)

*Biodiversity, Land use and resource management, ecological transition.*

BAGAP studies biodiversity in human-impacted areas. Our team explores how farming and land management practices affect biodiversity across various scales, focusing on agroecology and natural resource conservation.

## GRAPPE RESEARCH UNIT

(USC ESA | INRAE)

*Agro-industry, Food systems, Supply Chain Management, food innovation*

Understanding the quality (nutritional, functional, sensory, and environmental) of fresh and processed plant-based products. Supporting stakeholders in agroecological and food transitions. Developing tools and methods for multi-criteria quality characterization.



DISCOVER OUR RESEARCH PROJECTS

## LEVA RESEARCH UNIT

(USC ESA | INRAE)

*Legumes, Crop Ecophysiology, Agroecology, resilience in crops*

The LEVA research unit focuses on the design and management of crop associations including legumes for various objectives. It studies species interactions, nitrogen use, weed control, resilience, and plant-soil relations. LEVA developed LEVAbagMD to assess soil organic matter degradation.

## URSE RESEARCH UNIT

(USC ESA | INRAE)

*Livestock Farming Systems, One-Health, animal welfare, Farm Management Practices*

The URSE research unit focuses on the health and well-being of production animals. It assesses animals' coping abilities and matches between animal profiles and farming systems. It also studies farmers' potential to adopt innovative livestock health management practices.



## CAMPUS D'ANGERS

55 rue Rabelais  
BP 30748  
49007 ANGERS CEDEX 01

## CAMPUS DE PARIS

6 rue Hélène Boucher  
78280 GUYANCOURT

[www.groupe-esa.com/en/](http://www.groupe-esa.com/en/)

Tél. 02 41 23 55 55

